



**CORAL TRIANGLE
INITIATIVE**
ON CORAL REEFS, FISHERIES AND FOOD SECURITY

Indonesia Implementation Reports

Ministry of Marine Affairs and Fisheries

Sulu-Sulawesi Seascape Project

17 October 2018

Bandara International Hotel, Banten, Indonesia



giz Deutsche Gesellschaft
für Internationale
Zusammenarbeit (GIZ) GmbH

On behalf of



Federal Ministry for the
Environment, Nature Conservation,
Building and Nuclear Safety

of the Federal Republic of Germany

Background

17.504

Islands

6.4 million km²

Total area of water

108.000 km

Coastline length



172

MPAs

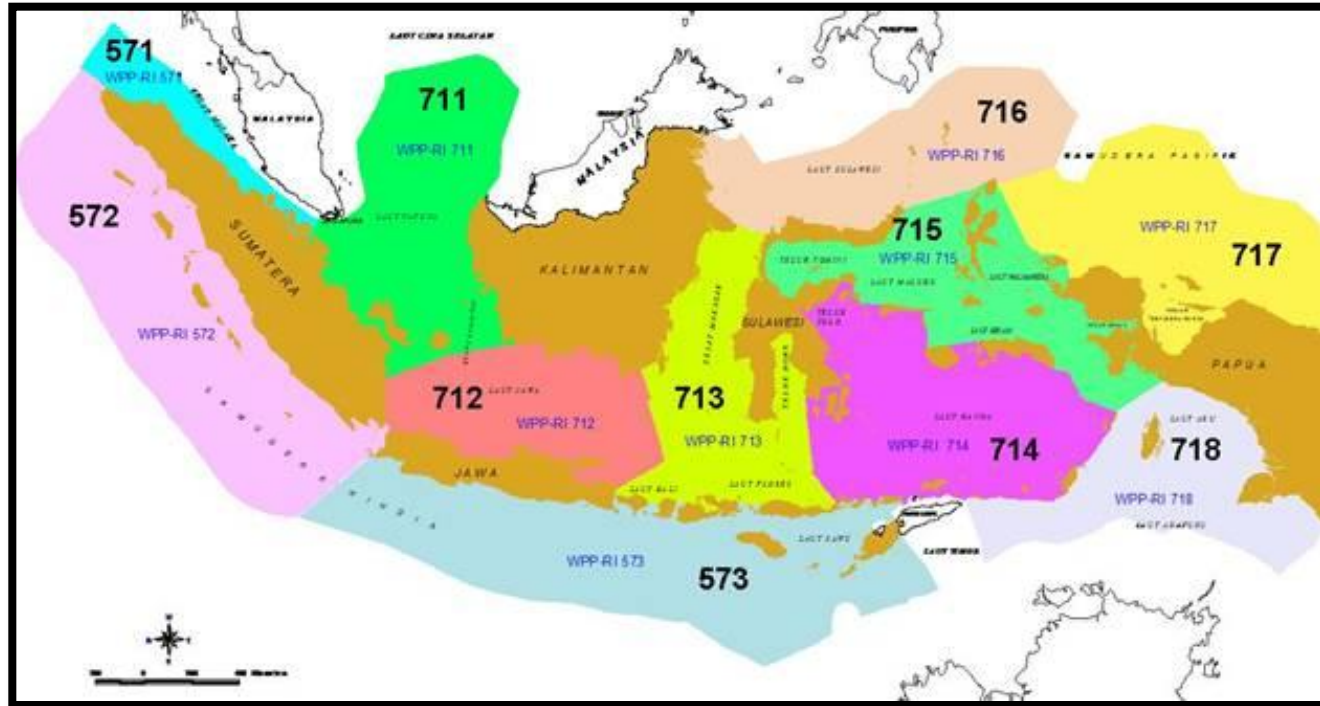
>20 million ha

Total area of MPA

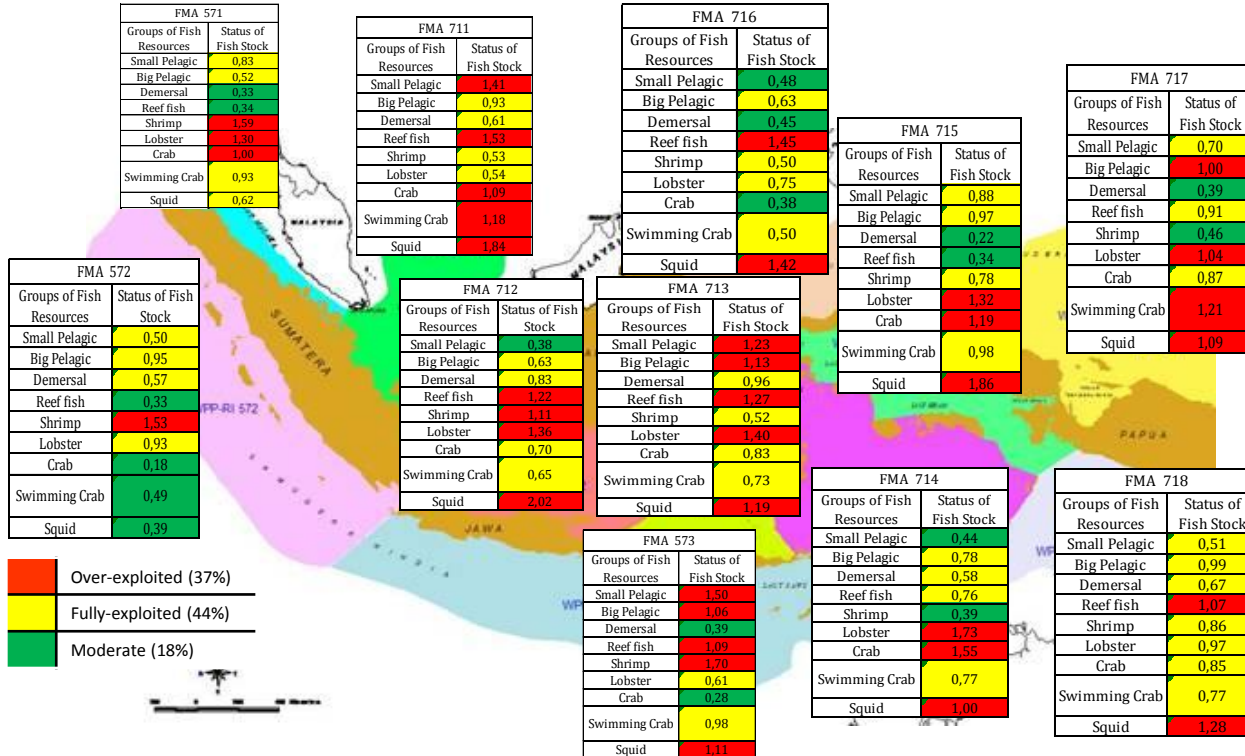
11

FMA

Indonesia Fisheries Management Area

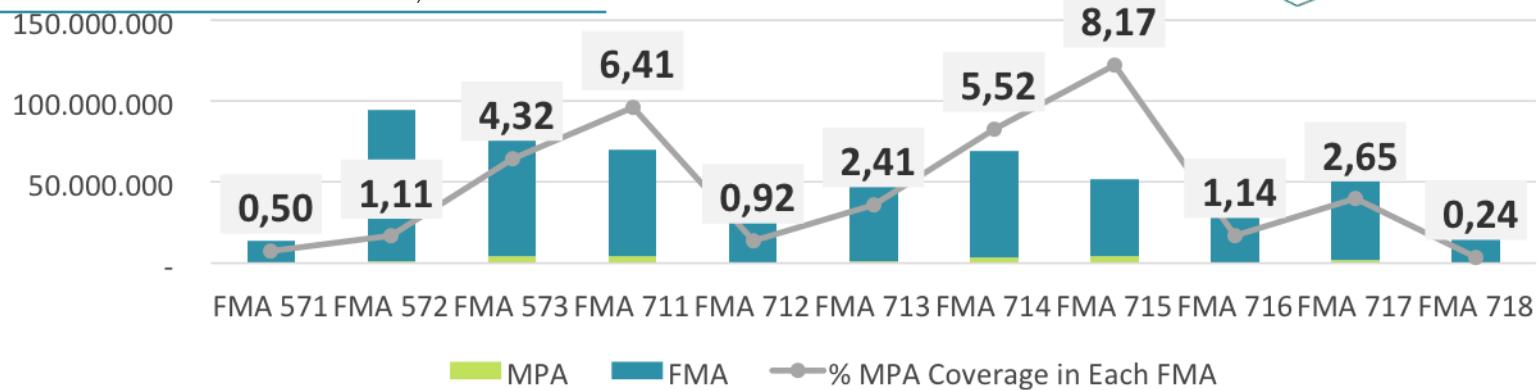
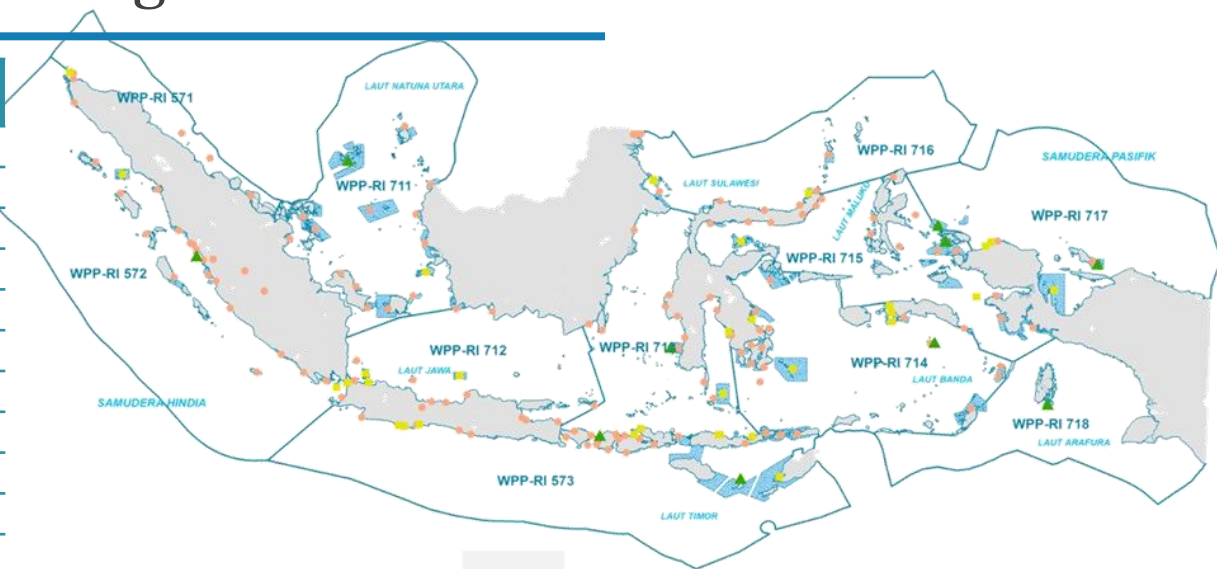


Status of Fish Stock Utilization



MPA within Fisheries Management Area

No	FMA	MPA SIZE (ha)	FMA SIZE (ha)	% MPA	SUM MPA
1	571	69.364	14.009.132	0,50	4
2	572	1.038.235	93.605.689	1,11	27
3	573	4.076.483	94.306.541	4,32	17
4	711	4.218.426	65.821.917	6,41	19
5	712	397.778	43.432.056	0,92	13
6	713	1.150.397	47.719.293	2,41	28
7	714	3.637.202	65.843.418	5,52	25
8	715	3.884.826	47.569.557	8,17	22
9	716	601.701	52.628.860	1,14	13
10	717	1.683.484	63.556.631	2,65	3
11	718	114.000	47.275.657	0,24	1



Indonesia MPA Achievement through the year

Aichi Target 10%

Achievement per Aug 2018

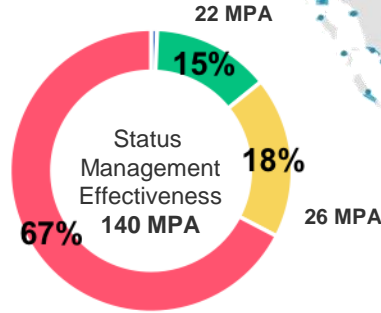
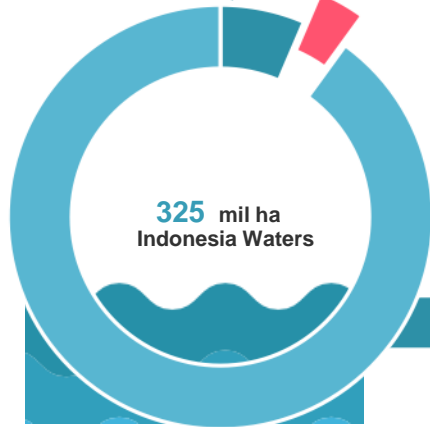
20,87 mil ha

Target 2030

11,63 mil ha

3,58%

6,42%



92 MPA



677.904,22 1.774.891,94

2015

2016

17.302.747,78

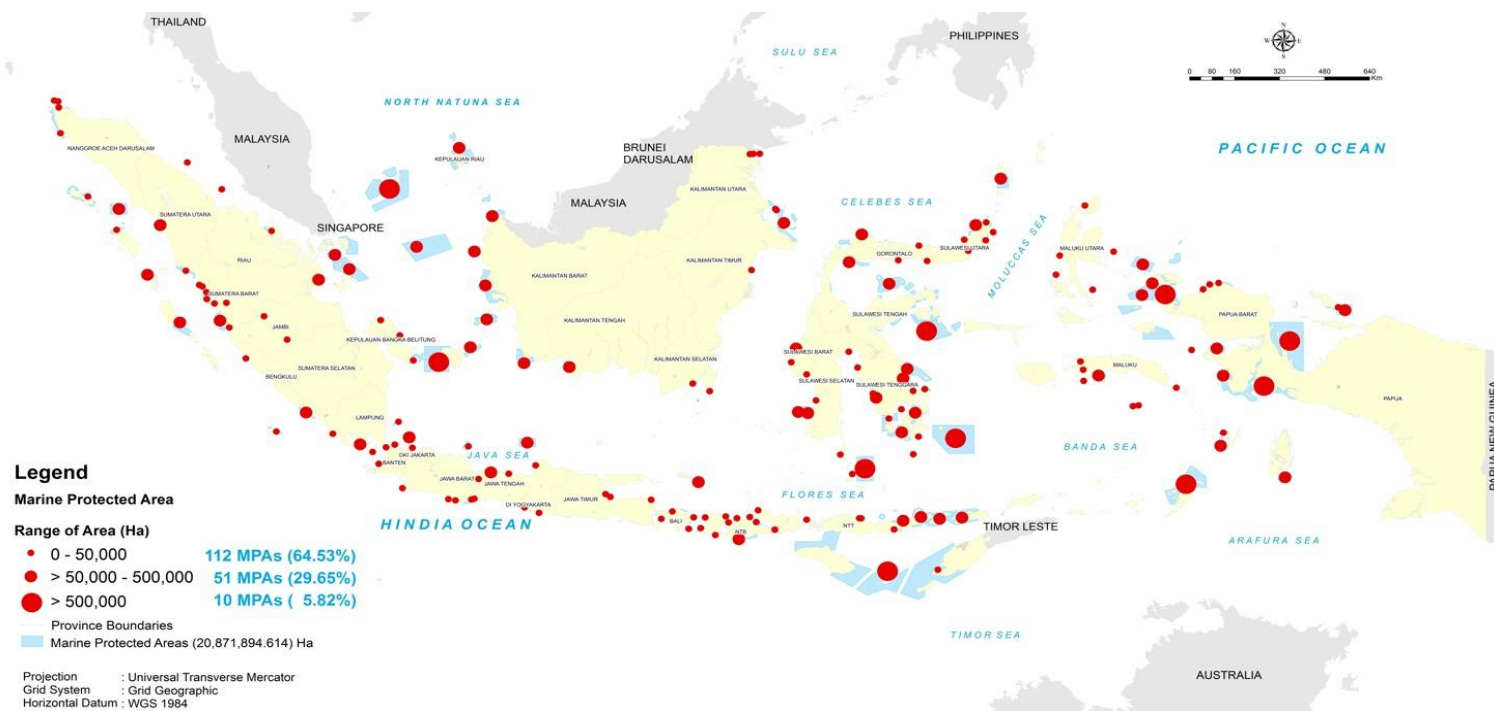
1.164.042,29

20.871.894,61 ha
172 kawasan

Challenges

- How MPA well managed and contributed to Fisheries
- Human resources competent improved
- Funding

Indonesia MPA Location/Distribution



Berau Marine Protected Area

285.548,95 ha

PETA KAWASAN KONSERVASI PESISIR DAN PULAU-PULAU KECIL, KEPULAUAN DERAWAN DAN PERAIRAN SEKITARNYA DI KABUPATEN BERAU PROVINSI KALIMANTAN TIMUR

LAMPIRAN II:
KEPUTUSAN MENTERI KELAUTAN DAN PERIKANAN REPUBLIK INDONESIA
NOMOR : 87/KEPMEN-KP/2016
TENTANG KAWASAN KONSERVASI PESISIR DAN PULAU-PULAU KECIL, KEPULAUAN DERAWAN DAN PERAIRAN SEKITARNYA DI KABUPATEN BERAU PROVINSI KALIMANTAN TIMUR



**PETA PENETAPAN
KAWASAN KONSERVASI PESISIR DAN PULAU-PULAU KECIL
KEPULAUAN DERAWAN DAN PERAIRAN SEKITARNYA
DI KABUPATEN BERAU PROVINSI KALIMANTAN TIMUR**
Luas : 285.548,95 ha



SKALA 1 : 200.000
Proyeksi : Universal Transverse Mercator
Sistem Grid : Grid Geografis
Datum Horizontal : WGS 1984

Keterangan :

- Titik Referensi I (Taman Pesisir Kepulauan Derawan)
- Titik Referensi II (Taman Pulau Kecil Kepulauan Derawan)
- Batas Kecamatan
- Garis Pantai

Zonasi

- Zona Iriti
- Zona Pemanfaatan Terbatas
- Zona Lainnya

Kawasan Konservasi yang Dikelola BKSDA (bukan bagian dari TPKD)

- TWAL P. Sangalaki
- SM. P Semana (belum ada tata batas)

INSET PETA



Keterangan Riwiyat dan Sumber Peta

- Peta Rupa Bumi Indonesia Skala 1 : 50.000 Badan Informasi Geospasial Tahun 2014
- Pengamatan Data & Analisis Tim Zonasi Berau Tahun 2012-2013
- Survei Lapangan : The Nature Conservancy Berau Program Januari Tahun 2013

Menyusunkan :
a. Direktur Jenderal Pengelolaan Ruang Laut
Direktur Konservasi dan Penangkaran Hewan Laut
b. Andi Ruswidi, M.Si
Disetujui oleh :
Gubernur Kalimantan Timur
Dr. H. Anas Fariq, M.Hk

MENTERI KELAUTAN DAN PERIKANAN
REPUBLIK INDONESIA,

BUREAU PULAUARATTA

KEPUTUSAN
MENTERI KELAUTAN DAN PERIKANAN REPUBLIK INDONESIA
NOMOR 87/KEPMEN-KP/2016
TENTANG
KAWASAN KONSERVASI PESISIR DAN PULAU-PULAU KECIL
KEPULAUAN DERAWAN DAN PERAIRAN SEKITARNYA
DI KABUPATEN BERAU PROVINSI KALIMANTAN TIMUR
DENGAN RAHMAT TUHAN YANG MAHA ESA
MENTERI KELAUTAN DAN PERIKANAN REPUBLIK INDONESIA,



Trained and certified manager

Competency certification

East Kalimantan Governor Decree

Interim Management Unit



Updated management plan

Ready to be legalized

Enhanced management effectiveness

Enhanced management effectiveness



© GIZ/Noora

**Socialization to local community
Tanjung Batu, 2018**



© TNC

**Surveillance
training
Tanjung Batu, 2018**

Status Management Effectiveness of Berau MPA



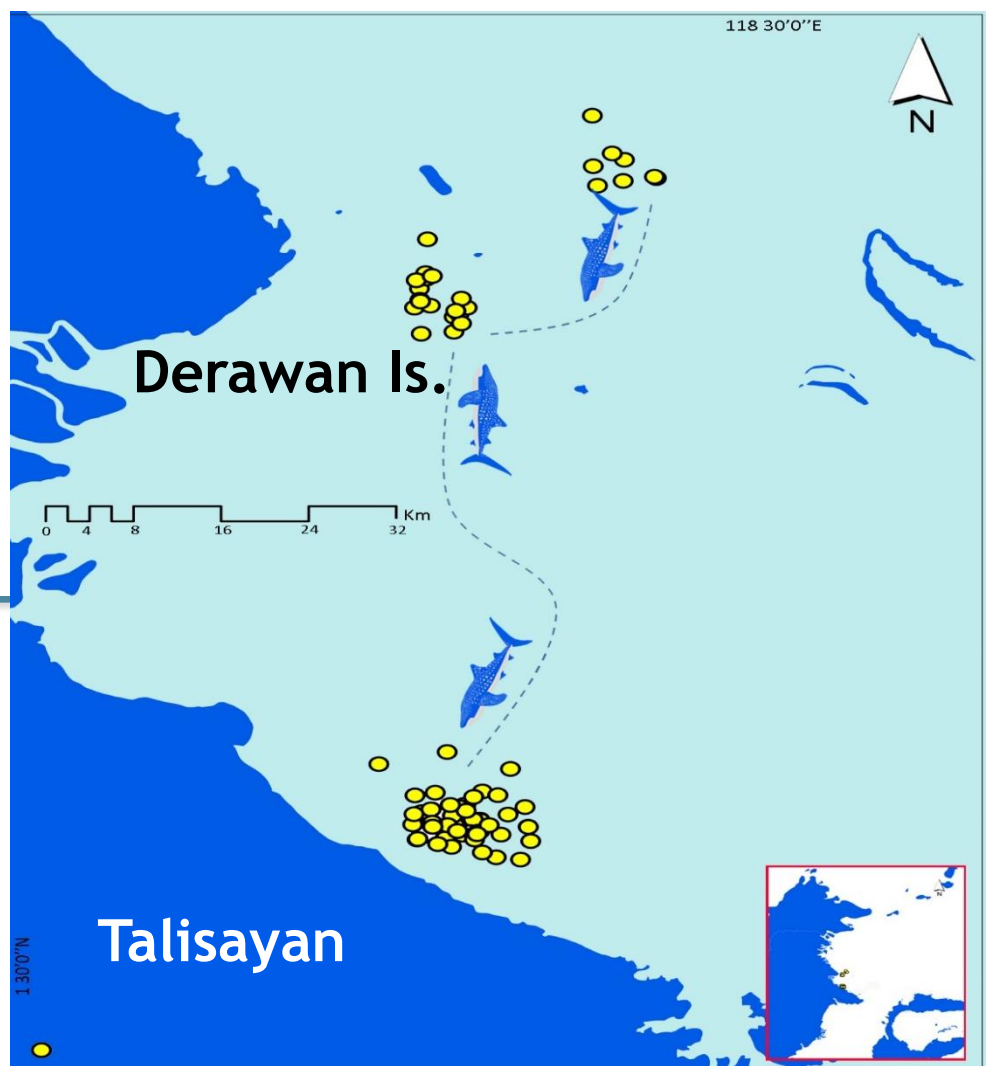
Better whale shark's population status in Berau MPA

Total
identified
individual in
Berau MPA

98

Individual found
both in Derawan
Is. and Talisayan

20



Final Status of Outputs – MPA

	OUTPUT		ACTIVITY	STATUS
1	Capacities of CTI and Relevant Government Institutions of the Sulu-Sulawesi-Seascape Countries are Enhanced	1.1.1	Conduct technical meetings between MMAF and other gov. Institution and NGO's to discuss trainings needs	DONE – September 2016 Participant: MMAF, TNC, WWF, CTC (20 pax) Result: Programs and training needs are identified
		1.1.2	Workshop to identify capacity needs (assessment and development planning capacity).	DONE – March 2017 Participant: MMAF, NCC Indonesia (30 pax) Result: Capacity Needs Assessment report
		1.3.2	Training and certification on SK3 MPA	DONE – Nov 2017 Participant: 20 pax from MMAF & 5 provinces of Indonesian part Sulu-Sulawesi Seascape Result: all participant trained & certified
2	Coordinating Mechanisms Among the Sulu-Sulawesi Seascape Countries in the framework of the CTI are Improved	2.1.1	Establish National Country Implementation Team in Indonesia with DG Decree	PENDING – Signing process The IA will be signed by GIZ and Secretary General.

	OUTPUT		ACTIVITY	STATUS
3	Prepare and Implement Regional, National and Local Activities within The Framework of The RPOA of CTI with a Special Focus on MPA, EAFM and Climate Change Adaptation Planning	3.1.1 – 3.1.3	<ul style="list-style-type: none"> - Preparation meeting - Workshop in Balikpapan to identify possible support areas concerning the RPOA implementation - Finalization of the IND workplan 	<p>DONE – March, Sept, Oct, Nov 2016</p> <p>Participant: MMAF, TNC, WWF, East Kalimantan Province, Berau District (80 pax)</p> <p>Result: Indonesia workplan is developed</p>
		3.2.2	Berau MPA’s Patrolling & Surveillance activities	<p>DONE – August 2018</p> <p>TNC assisted Berau MPA management unit;</p> <ul style="list-style-type: none"> -Patrolling equipment was handed over to Marine & Fisheries Office of East Kalimantan -Governor Decree for interim management unit was issued on Aug 2017
		3.2.4	Berau MPA’s Socialization & awareness raising	
		3.2.7	Berau MPA’s interim management unit	
			Berau MPA’s Management Plan	

	OUTPUT		ACTIVITY	STATUS
4	Research of Importance for the Sulu Sulawesi Seascape/CTI is Conducted and the Results are Disseminated	4.2.3	Study on other important marine fauna apart from marine turtle (whaleshark)	<p>DONE – Aug 2018</p> <ul style="list-style-type: none"> - WWF conducted whale shark research, scoping in Sulu Sulawesi Seascape; -Code of conduct for whale shark interaction as part of the activity are developed <p>Participant: GIZ, WWF, Berau District Result: whale shark scoping & project socialization</p>
		4.3.1 – 4.3.2	Project socialization to East Kalimantan province & Berau District	<p>DONE – May and June 2017</p> <p>Participant: WWF, TNC, East Kalimantan province, Berau District Result: Project is socialized and ideas for implementation were collected</p>
5	Best Practices are Disseminated in The CTI Member Countries and Beyond	5.4.2	5.4.2. Development of audio-visual / film for public awareness and the general public	<p>DONE – August 2018</p> <p>Result:</p> <ul style="list-style-type: none"> -Whale shark video (2) -Sea turtle ranger video (1) -Local enforcement unit (1)

	OUTPUT		ACTIVITY	STATUS
5	Best Practices are Disseminated in The CTI Member Countries and Beyond	5.4.3	Translation from Bahasa to English: Indonesia National Action Plan for sea turtle & whaleshark Talisayan survey reports	DONE – March and April 2017 Result: National Plan of Action for Sea Turtle and Whaleshark Talisayan survey reports were translated
		5.12	Disseminate project results in the Sulu Sulawesi Seascape countries, CTI and beyond (globally including international platforms such as UNFCCC and CBD).	DONE – Oct 2018 Via Our Ocean Conference media channel

Final Status of Outputs - EAFM

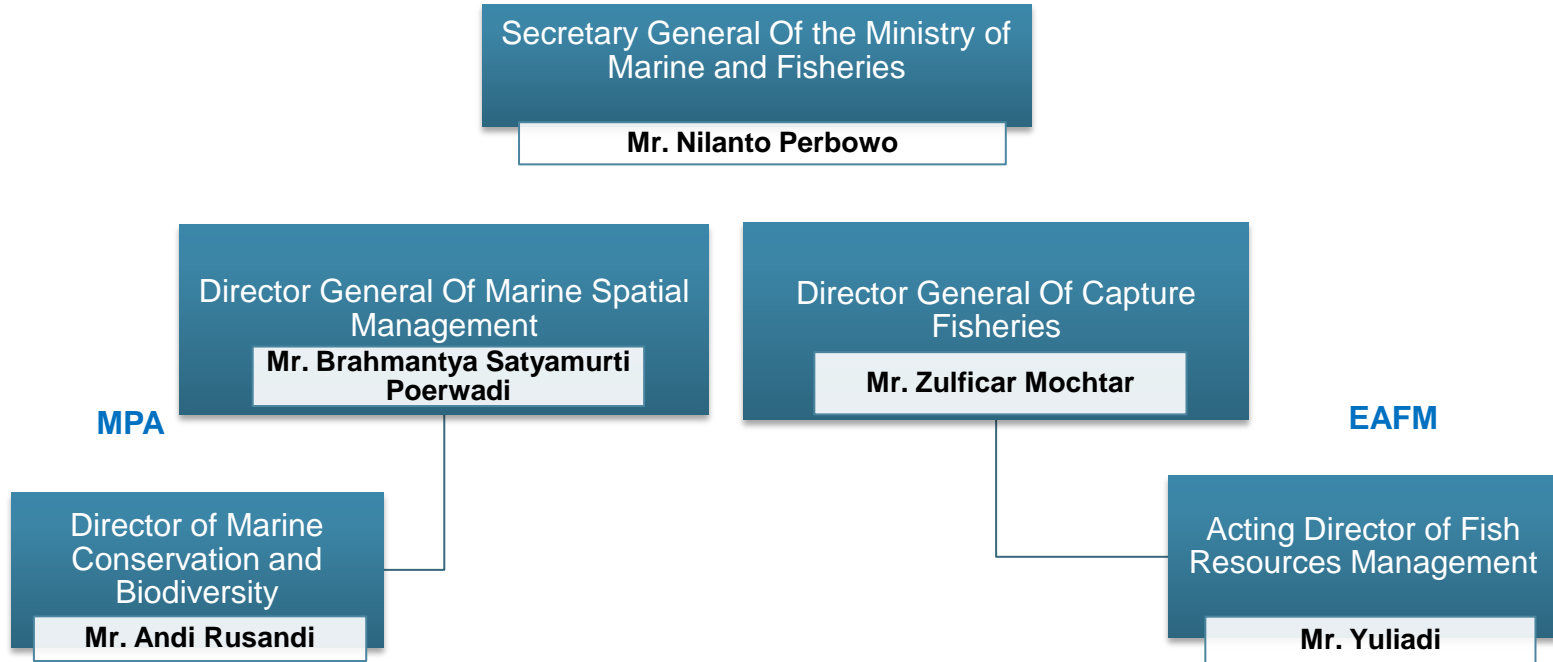
	OUTPUT		ACTIVITY	STATUS
1	Capacities of CTI and Relevant Government Institutions of the Sulu-Sulawesi-Seascape Countries are Enhanced	1.1.1	Conduct technical meetings between MMAF and other gov. Institution and NGO's to discuss trainings needs	DONE - Programs and training needs are identified As part of this activity, being facilitator on CTI-CFF Regional Workshop on EAFM collaboration with CMAR
2	Prepare and Implement Regional, National and Local Activities within The Framework of The RPOA of CTI with a Special Focus on MPA, EAFM and Climate Change Adaptation Planning	3.2.2	Assessment for EAFM little pelagic fish and demersal fish (from preparation until implementation) in WPP 716	As part of this activity, one of partner that support developing DG's National Guidelines for Harvest strategy Document (facilitate meeting)
		3.2.3	Preparation for the establishment of the management unit of Fisheries Management Area (WPP 716)	As part of this activity, Scientific Panel Meeting was conducted

Issues and Challenges

- **Project timeframe** → 2 years project period is only the starting point, it needs more time to get a holistic and further activities
- **Policy changes** → Transfer of MPA management authority from Regency Government to Provincial Government (Law No.32/2014)
- **Changes from SSME to CTI-CFF** → needs new IA
- **The coverage of working area is limited** → GIZ worked only in FMA 716, while fisheries management area is connected one another.

General Updates

Organizational Changes within the MMAF



Lessons learned

- Appointed people that sit in the Office are important → easy coordination & build trust
- Regular/routine meeting to track progress, planning next activity and overcome challenges are important
- Joint activity between Province & District builds cooperation among them
- Leader instruction is crucial
- It is necessary to improve the coordination between the parties involved in project implementation
- It is necessary to ensure the capability of the community in pilot area to sustain the financial needs

Ways forward - Beyond the project

- Formulate/develops concrete joint management action/plans based on connectivity and characteristics between 3 countries. Regional MPA Networks?
- Concrete actions to make Berau MPA as an marine ecotourism destination to improve community welfare/livelihood
- Continuous education, coaching and technical assistance for local fishermen to implement fishing business practices that environmentally sustainable and economically feasible
- Berau MPA Management effectiveness improvement through
 - Accelerate endorsement of East Kalimantan Provincial Marine Spatial Plan
 - Definitive Berau MPA management unit
 - Partnership and support for Berau MPA Management from government partners (NGO, local community groups, university, private sectors)
 - Routine enforcement and surveillance
 - Community empowerment and partnership
- Very welcome to future project/initiative from other donor
- Implementation of EAFM and Fisheries Management Councils in 11 Indonesia's Fisheries Management Areas

Contact Persons



Ir. Andi Rusandi, M.Sc
Director of Conservation and Marine Biodiversity
+62 21 3522045
+62 8111772337
andirusandi62@gmail.com



Amehr Hakim, M.Si
Deputy Director for MPA Management
+62 21 3522045
+62 8128162997
mehrhakim_77@yahoo.co.id



Firdaus Agung, Ph.D
Deputy Director for Conservation Network and Partnerships
+62 21 3522045
+62 8129951481
firda_ku@yahoo.com



Dr. Besweni
Deputy Director for Fisheries Resources management In Teritorial and Pelagic Water
+62 21 3519070 Ext. 1423
besweni06@yahoo.com

**TERIMA KASIH
SALAMAT
DANKE**